

System Requirements Overview

This document is updated regularly. Please visit [Doc-it.com/overview](https://doc-it.com/overview) for the current version.

This document contains the minimum hardware and operating system requirements for implementing Doc.It Suite ®. The specifics for your environments can influence our recommended minimum requirements.

Requirements at a Glance

	Doc.It Suite	Doc.It Explore	Doc.It Connect
Doc.It Server (page 2)	<input checked="" type="checkbox"/>	<input checked="" type="checkbox"/>	<input checked="" type="checkbox"/>
Scanning Workstation (pages 2-3)	<input checked="" type="checkbox"/>	<input checked="" type="checkbox"/>	
Doc.It Web Portal (page 6)	<input checked="" type="checkbox"/>		<input checked="" type="checkbox"/>

We encourage you to discuss your environment with us should you have any questions on your existing hardware, purchasing new hardware or upgrading your hardware.

For more detailed information and guidelines on system requirements, please contact John Glynn (jglynn@doc-it.com) or Ron Allan (rallan@doc-it.com).

Refer to the configuration options for Doc.It at the end of this document to see what the implementation might look like within your environment.



MINIMUM HARDWARE REQUIREMENTS FOR SERVER AND CLIENT WORKSTATIONS

Virtualized environments are accepted and must follow the requirements:

Doc.It Suite Server

- Server-class hardware only
- Minimum of 8 GB of RAM
 - If the server will host other software in addition to Doc.It Suite Server then we recommend increasing the RAM above the minimum to avoid slow performance
- Minimum of 4 CPUs/cores for the Doc.It Suite Server
- RAID configurations are accepted
- SCSI or SATA-II/III drives are accepted
 - Minimum 10Krpm speed
- Minimum of 500 GB available disk space
- Minimum 1 Gbps network adapter
- We recommend that a backup system must be in place and operational

For hardware that is to support a Windows SBS installation, the following are the additional minimum requirements¹:

- A minimum of 8 CPUs/cores for a minimum of 16 threads
- A minimum of 24GB of RAM²
- No more than 15 end-users of the entire SBS system with the Doc.It Suite Server installed

High Capacity Storage Devices, the following are the minimum requirements:

- Storage Area Networks (SANs) are supported when connectivity to the Windows server is done through an iSCSI connector allowing the SAN to appear as another local drive to the Windows server
- Network Attached Storage (NAS) devices are not supported unless they can appear to the Windows server hosting the Doc.It server as a local drive

Doc.It Suite Client / Web Portal / Scanning workstations

- Intel and AMD computers. Equivalent to i5, i7 processors
- Minimum of 8 GB of RAM for a 64-Bit system
- Minimum 1 Gbps network adapter

1 Before proceeding with an implementation to any Windows SBS Server, it is highly recommended that you review the full system requirements document and the information on SBS Premium at this Microsoft site – <http://go.microsoft.com/?linkid=9750068>

2 Note that Windows SBS Server 2011 is provided as a 64-Bit Windows operating system only.



MINIMUM OPERATING SYSTEM REQUIREMENTS

Doc.It Suite Server

Must be installed on a Windows-based Server operating system. Doc.It, Inc., currently supports the installation of the Doc.It Suite Server onto systems running the following Windows Server operating systems:

- Windows Server 2008, R2 Standard, Enterprise and Datacenter Editions
- Windows Server SBS 2011 Standard and Premium Editions³
- Windows Server 2012, R2, Standard and Datacenter Editions
- Windows Server 2016, R2, Standard and Datacenter Editions

Doc.It Suite Client / Web Portal⁴ / Scanning workstations

Doc.It Suite client must be installed to a Windows-based operating system. Doc.It Inc., currently supports the installation of the Doc.It Suite client onto systems running the following Windows operating systems:

- Windows 7 Professional
- Windows 8 Professional
- Windows 10 Professional
- Windows Server 2008 Terminal Server
- Windows Server 2008 R2 Terminal Server
- Windows Server 2012, R2 Remote Desktop Server
- Windows Server 2016, R2 Remote Desktop Server
- Servers that meet the requirements for implementation of Citrix's XenServer 5 and 6 as well as the hardware requirements previously mentioned for the Doc.It Suite Client on a Terminal/Citrix server

MINIMUM NETWORK REQUIREMENTS

Both the Doc.It Suite Server and the Doc.It Suite Client are written to be installed and operated on a Microsoft Windows TCP/IP-based network at LAN speeds of 1Gbps or greater.

SCANNERS/MULTIFUNCTION NETWORK DEVICES

Network Multifunction, TWAIN compliant and ScanSnaps are excepted as long as they can be configured to direct output to a folder. Document names must be unique.

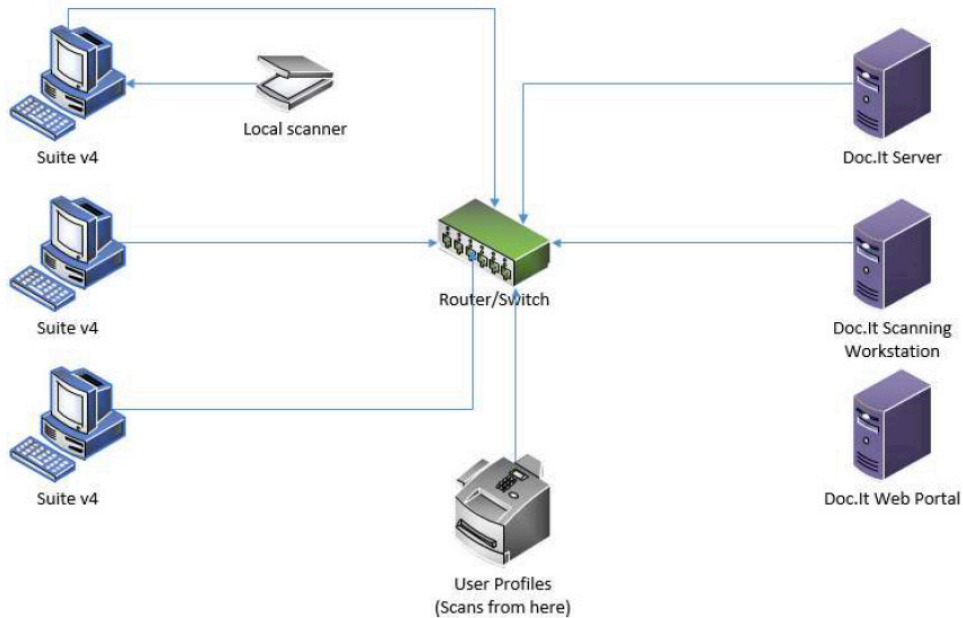
³ So long as the other requirements for SBS server are met.

⁴ Windows 7 & 8 only allow a maximum of 20 concurrent SMB connections. Server operating systems do not have this limitation.

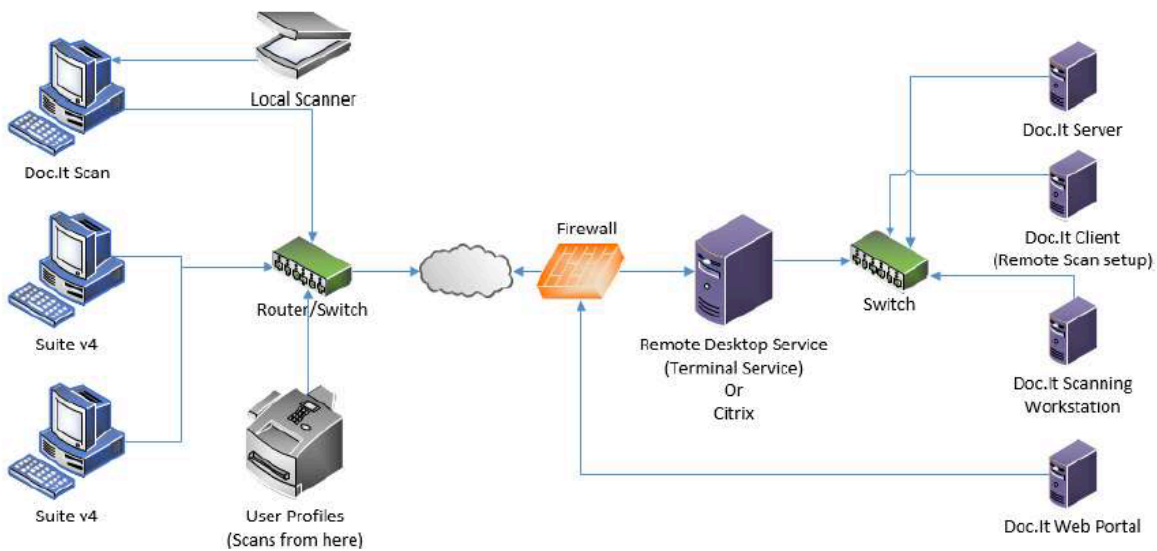


CONFIGURATION OPTIONS

Classic Setup



Hosted / Remote Setup



The Web Portal when running under Windows 7 or Windows 8 will only allow up to 20 SMB concurrent connections. A Server Operating System does not have this limitation.



Global Headquarters
 1425 Cormorant Drive, Suite 201
 Ancaster ON L9G 4V5
 Canada

USA
 7848 W. Sahara Ave.
 Las Vegas, NV 89117
 USA

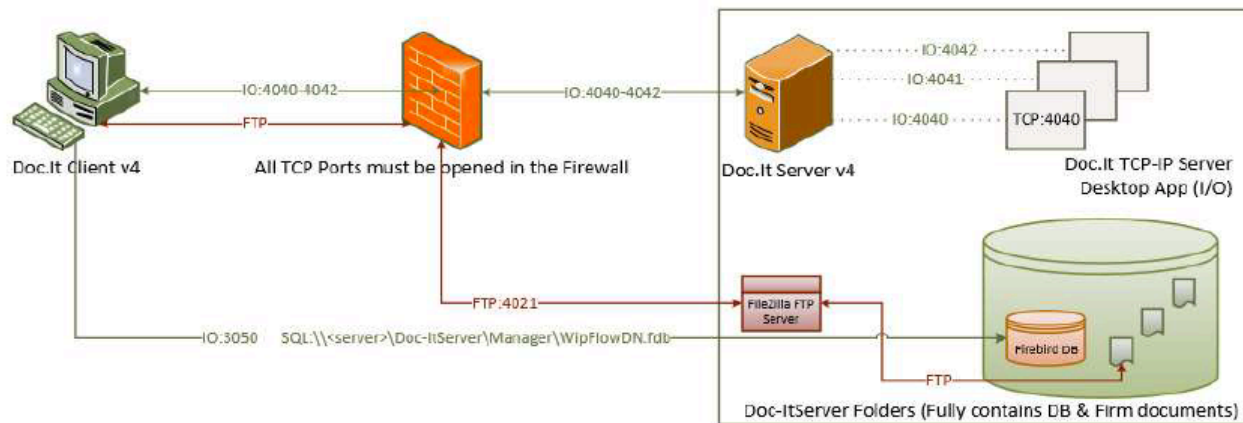
United Kingdom
 4th Floor, Euston House
 24 Eversholt Street
 London, NW1 1AD, UK

COMMUNICATION PROTOCOL

Doc.It Suite Client software communicates with its Doc.It Server through the TCP Protocol and through Windows shares opened on the Server. All TCP Ports must be allowed through the internal Firewall between the Doc.It Server and the user workstation(s).

Doc.It Server hosts Doc.It TCP-IP Server application instances to run. Each instance of the Doc.It TCP-IP Server is assigned a TCP port starting at 4040 and executes File IO requests from the Doc.It Client. The Windows shares allow direct SQL execution to the Database on port 3050.

Doc.It Server hosts FileZilla Server and executes FTP requests from the Doc.It Client. The TCP port is 4021.



Doc.It®

info@doc-it.com | www.doc-it.com
© 2018 Doc.It® all rights reserved

Global Headquarters
1425 Cormorant Drive, Suite 201
Ancaster ON L9G 4V5
Canada

888.693.6248
905.547.1100

USA
7848 W. Sahara Ave.
Las Vegas, NV 89117
USA

888.693.6248
905.547.1100

United Kingdom
4th Floor, Euston House
24 Eversholt Street
London, NW1 1AD, UK

00 1 888 693 6248
00 1 905 547 1100

DOC.IT CLIENT WEB PORTAL SERVER

The Doc.It Web Portal Server, version 4.x, can be successfully run on a workstation if the firm has less than 15 users. The workstation must meet the same requirements listed for running the Doc.It Suite client. Storage requirements for the web portal will vary depending on the number of the firm's clients that become portal users and the amount of information (# of files) that is transferred – by the client and the firm – via the portal. It is conceivable that average client/firm disk utilization could require 100MB of disk space over a year; this estimate can be used to determine the expected disk space based on the number of clients that will become portal users.

If the firm is greater than 15 users the Doc.It Web Portal Server must be a Microsoft supported server-grade system running Windows Server 2008, or later, other than SBS Server. The Doc.It v4.x Client Web Portal Server comes as a complete package and does not require additional software on the hosting system to run.

Note: Windows 7/8 desktop operating systems only allow 20 simultaneous connections to the portal. Each employee desktop requires one of the 20 connections. This is a hard limit within the operating system. Firms with more than 15 employees must run portal on a server.

A hardware firewall appliance with a configurable DMZ port is strongly recommended to prevent unauthorized outside access to the web portal system or the firm's LAN environment. The implementation of a firewall would be a requirement for any outsource/hosted solution. The system that is hosting the Doc.It v4.x Web Portal Server would be connected to the DMZ port of the Firewall device.

The system that is hosting the web portal must be reachable by Internet-based systems. This will require that an Internet-based IP Address (static) and Fully Qualified Domain Name (FQDN) be associated with the web portal host system. If the host is within the DMZ, then the IP address of the Firewall that is Internet-facing is used along with the FQDN to create the Internet DNS entry and the Firewall is configured to forward the appropriate "traffic" to the web portal host system.

Additionally, a Secure Sockets Layer (SSL) Certificate will be required if you wish to secure the traffic between Internet-based clients and the web portal system. A SSL certificate pair is used to encrypt all the traffic between the client system and the web portal system ensuring that the information passing between these systems cannot be intercepted and understood by any unauthorized individual. Certificates for the web portal must be available in a format acceptable to Microsoft's IIS and must be 256-Bit / 2048-Bit. Check with the various Certificate Authorities (CAs) regarding availability of certificate formatting (without having to perform conversion) of their SSL certificates.

NOTE: Microsoft's Internet Information Server (IIS) is required to run the Doc.It Web Portal Server.

